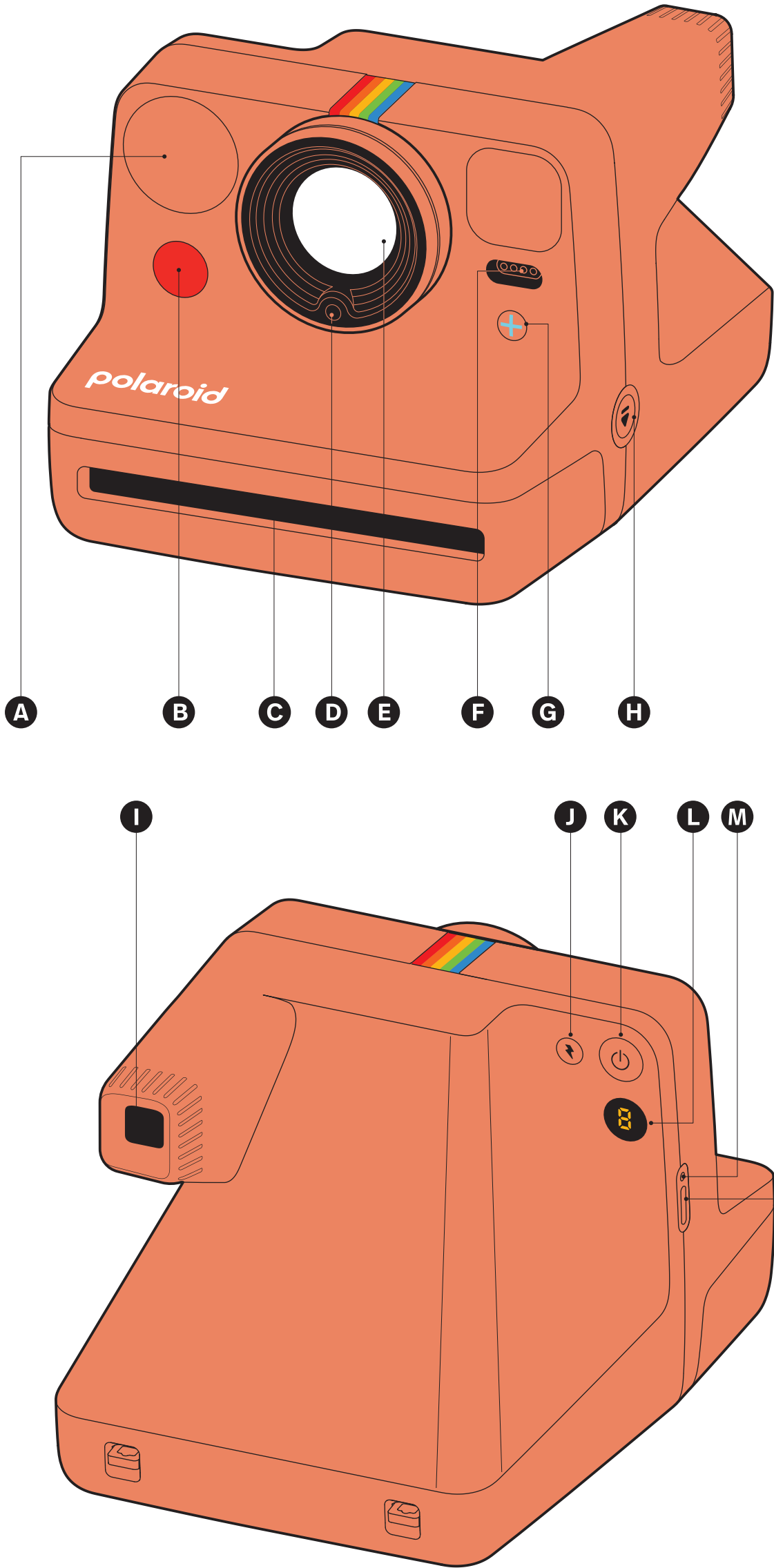


Now+
Generation 3
Quick Start Guide

- A Flash
- B Shutter Button
- C Film Shield
- D Light Meter
- E Camera Lens
- F Mode Indicator
 - Single Press for Self Timer
 - Double Press for Double Exposure
 - Long Press For Custom shortcut
- G +Button*
- H Film Door Button
- I Viewfinder
- J Flash ON | OFF Button
- K Camera ON|OFF Button
- L Film Counter LED
- M Battery Level Indicator
 - Battery full
 - Battery half full
 - Battery low
- N USB-C Charging Port

*The + LED is on when the Polaroid App is connected



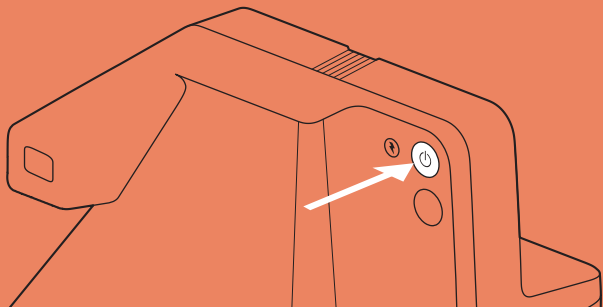
1. Get Started



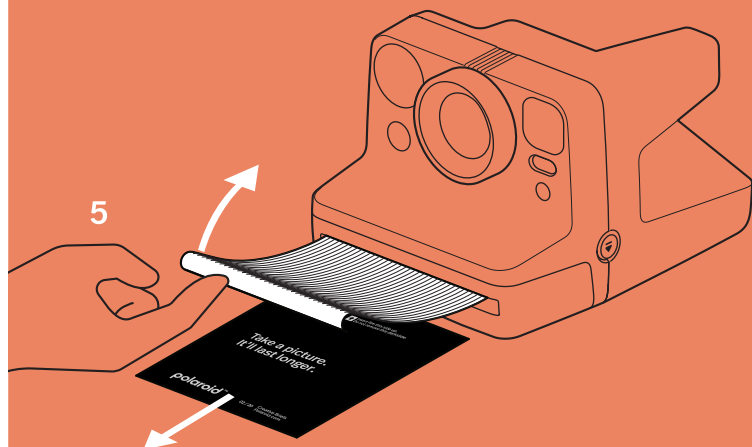
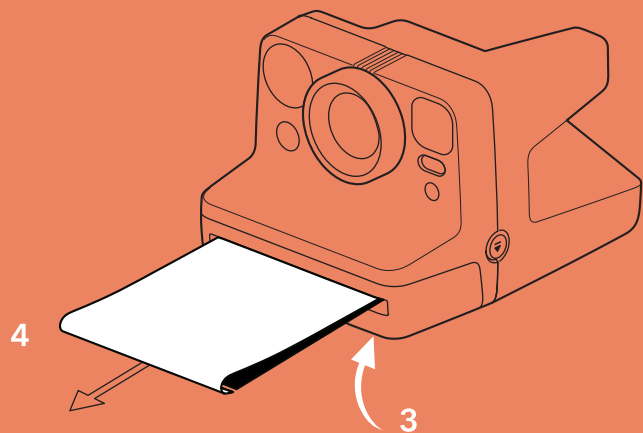
Scan the QR code to get the app, free additional warranty, tips, manuals and more

polaroid.link/nowplus

2. Turn On

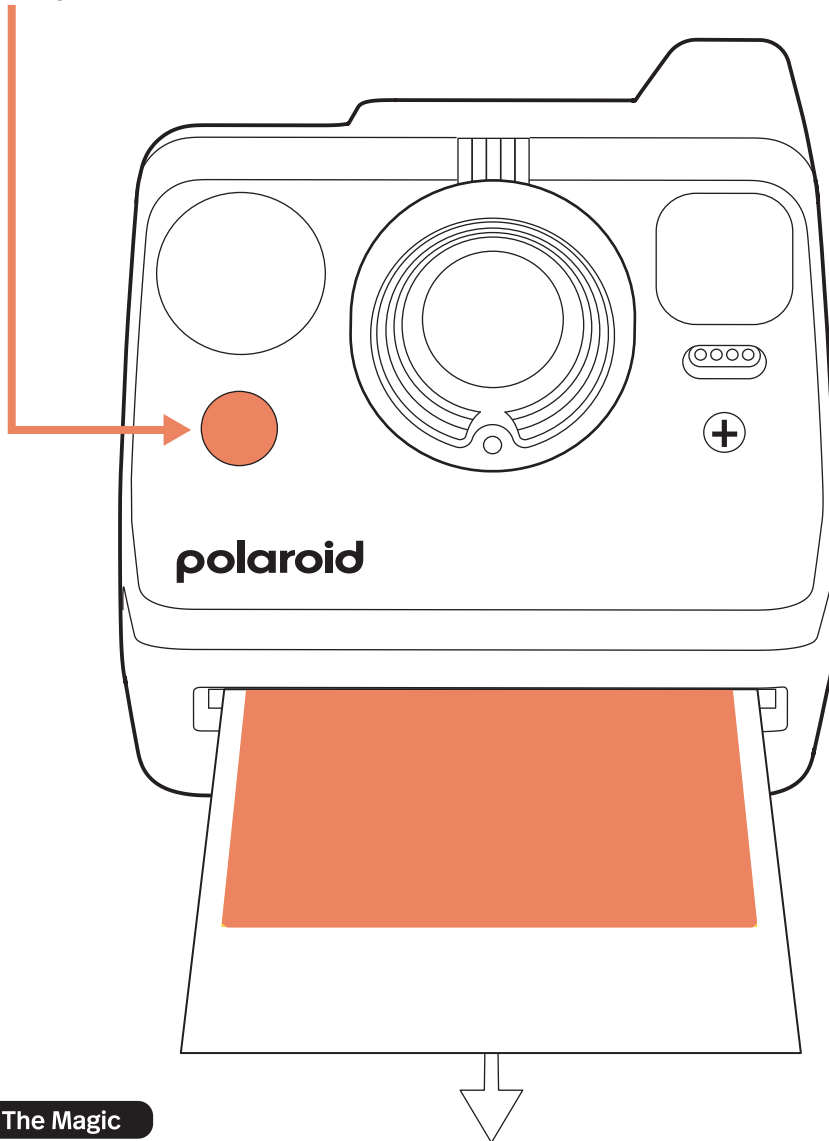


3. Load film



4. Take a Shot

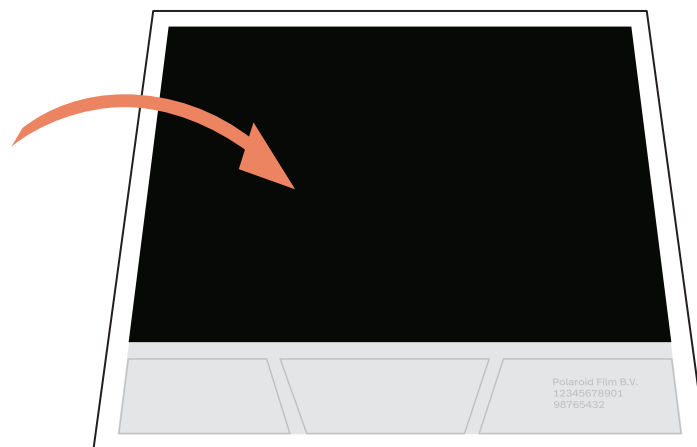
Aim camera, half-press the shutter button to focus, full press to shoot.



5. The Magic



Don't shake the picture! Place it in a dark area or face down on a flat surface and wait for the magic to develop.



App Controlled Features

Use the QR code above and download the Polaroid App to scan and share your photos, access more features and gain even greater control over your photography. To connect your camera, simply turn it on and start the app. There is no need to pair the camera in your phone's settings.

