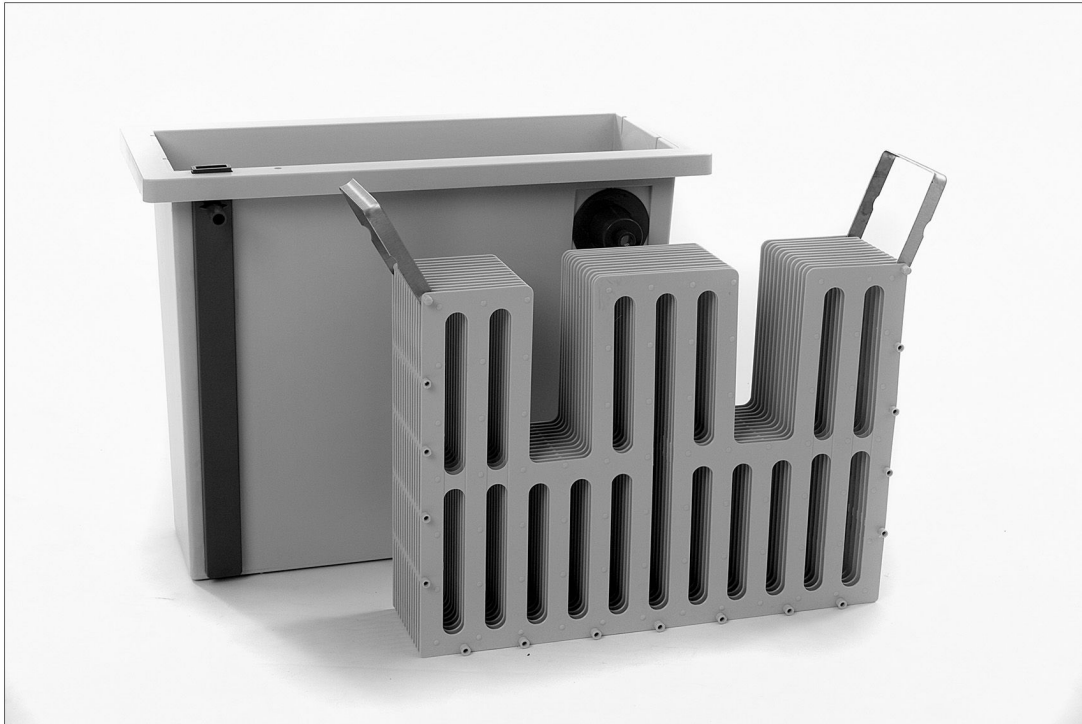


AUTO PRINT WASHERS



Product Codes, Standard PTP231, Major PTP233

Designed to wash fibre-based papers that require longer washing time than RC type papers. The unique agitation system gently moves the print basket from side to side ensuring that the chemicals remaining in the paper base are fully removed.

The standard print washer will take up to twelve prints 10x12" (25.4x30.5cm) or 8x10" (20.3x25.4cm), or twenty four prints 5x7" (12x18cm) or smaller.

The major model handles 12 prints up to 12"x16" (30x40cm) or twenty-four prints up to 8"x10" (20.3"x25.4")

Each print is held separately in the basket allowing water to wash both sides of the print.

Agitation of the print basket is facilitated by water pressure that operates a pump device in the washer inlet. It is important that water pressure is carefully adjusted until the basket is gently moving backward and forward.

